

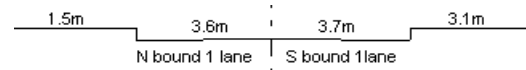
YEAR 2015

CORE STATION 5102

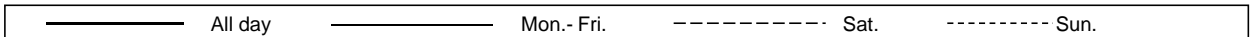
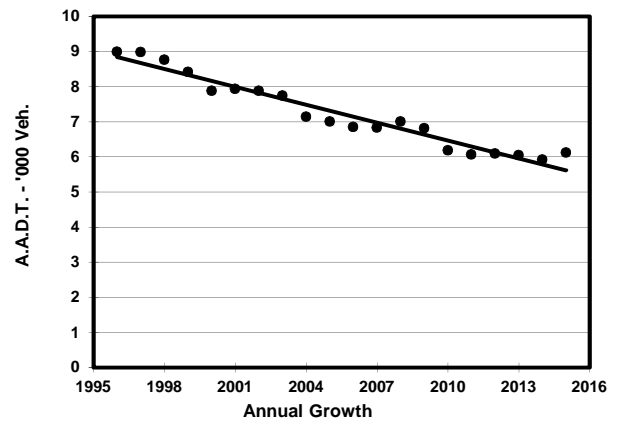
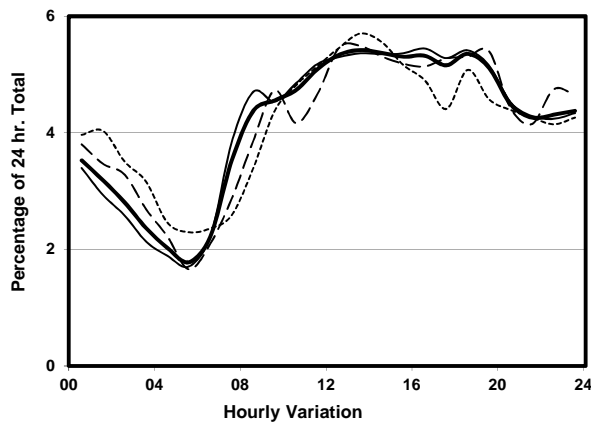
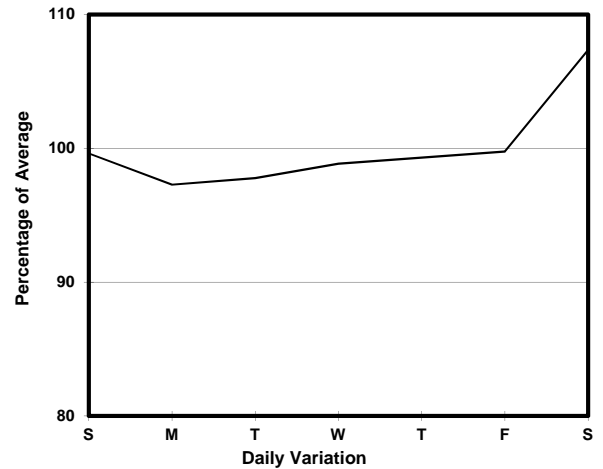
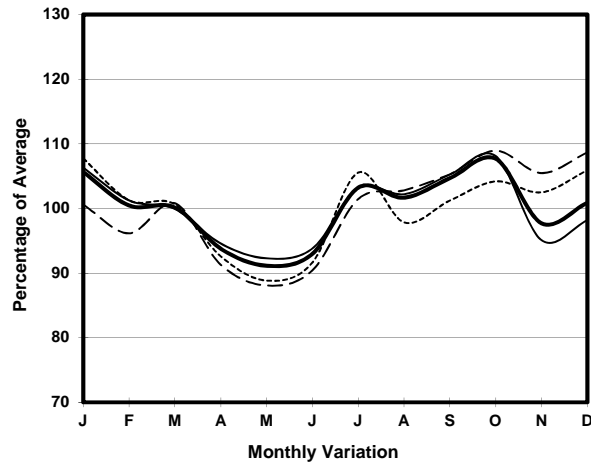
ROAD NETWORK MINOR

ROAD TYPE LOCAL DISTRIBUTOR

LINK TSENG CHOI ST (from CASTLE PEAK RD NORTHERN JUNCTION to CASTLE PEAK RD SOUTHERN JUNCTION)



1. TRAFFIC FLOW VARIATION AND GROWTH



2. TRAFFIC CHARACTERISTICS (BY DIRECTION)

Parameter	All - Day	Mon. - Fri.	Sat.	Sun.
SOUTH BOUND				
A.A.D.T.	3730	3680	4010	3760
R 12 / 24 - %	59	60.1	57	55.9
R 16 / 24 - %	77.7	79.1	75.7	73.8
AM Peak Hour	0800-0900	0800-0900	0900-1000	0900-1000
One-way flow at AM peak hour	170	170	200	160
T - % (AM)	-	-	-	-
PM Peak Hour	1800-1900	1800-1900	1700-1800	1600-1700
One-way flow at PM peak hour	200	210	210	190
T - % (PM)	-	-	-	-
Prop.of commercial vehicles - 16 hr.	-	-	-	-
NORTH BOUND				
A.A.D.T.	2390	2360	2590	2310
R 12 / 24 - %	60.4	61.6	58.1	57.6
R 16 / 24 - %	77.6	78.6	76.8	74.3
AM Peak Hour	0900-1000	0900-1000	0900-1000	0900-1000
One-way flow at AM peak hour	120	120	110	110
T - % (AM)	-	-	-	-
PM Peak Hour	1600-1700	1600-1700	1800-1900	1800-1900
One-way flow at PM peak hour	130	130	160	120
T - % (PM)	-	-	-	-
Prop.of commercial vehicles - 16 hr.	-	-	-	-

3. OTHER INFORMATION AND COMMENT